



Derbyshire Natural Capital Strategy – Appendix 10

Appendix 10 – Maps of habitat priorities according to Landscape Character Type and National Character Area – Derby City

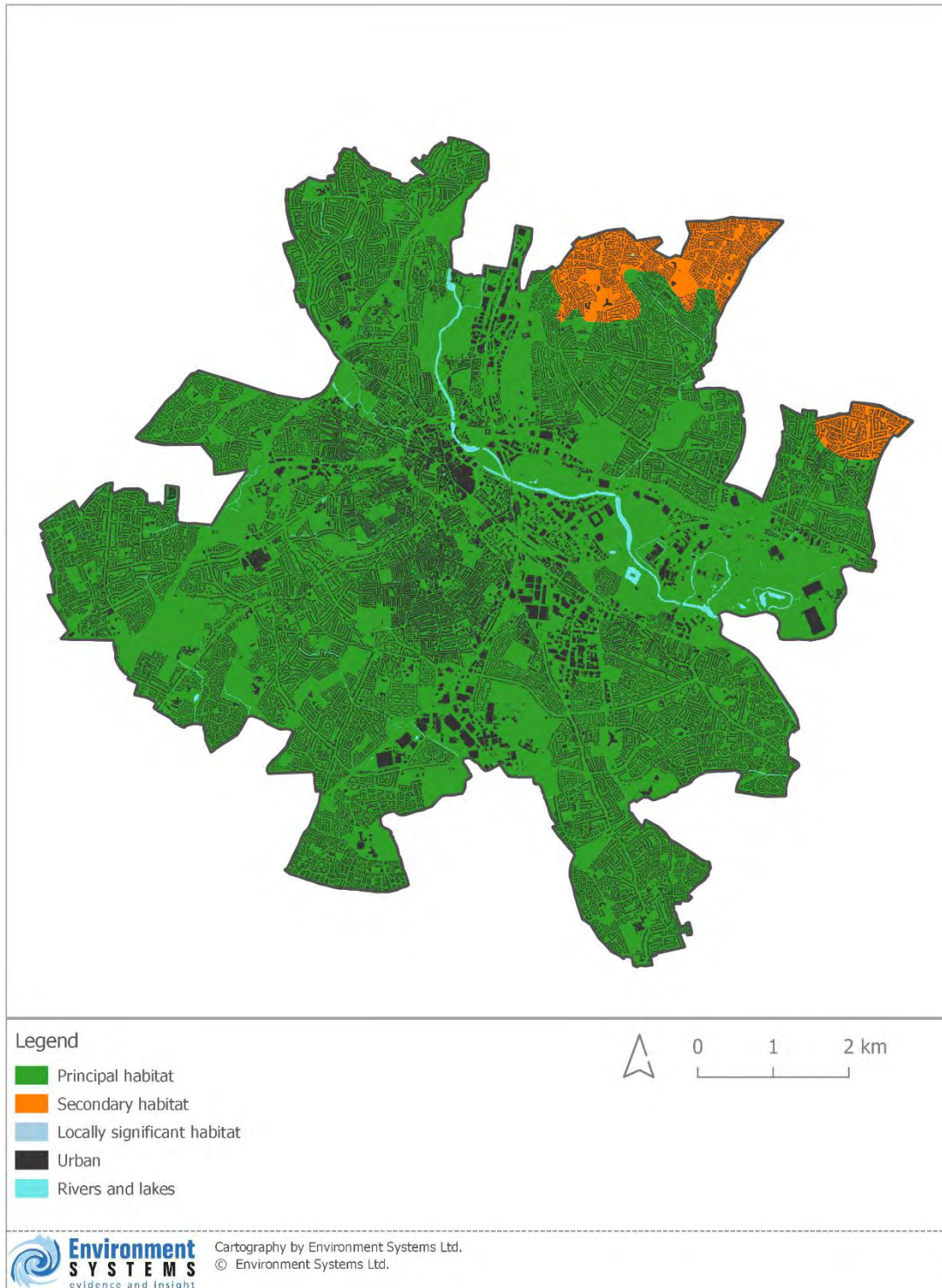


Figure 1: Landscape Character Types where the Grassland broad habitat type is a priority for conservation, restoration or habitat creation

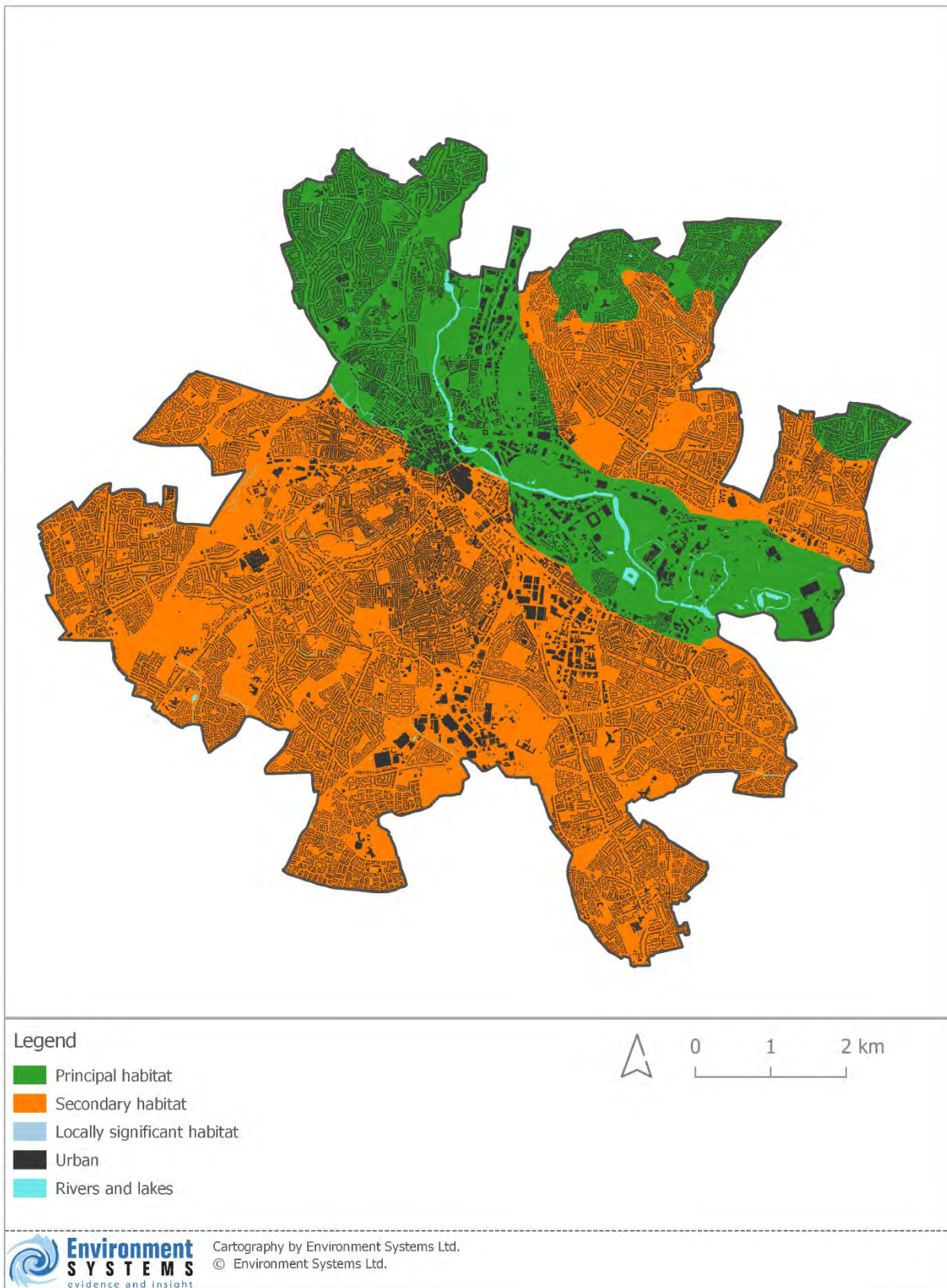


Figure 2: Landscape Character Types where the Woodland & Forest broad habitat type is a priority for conservation, restoration or habitat creation

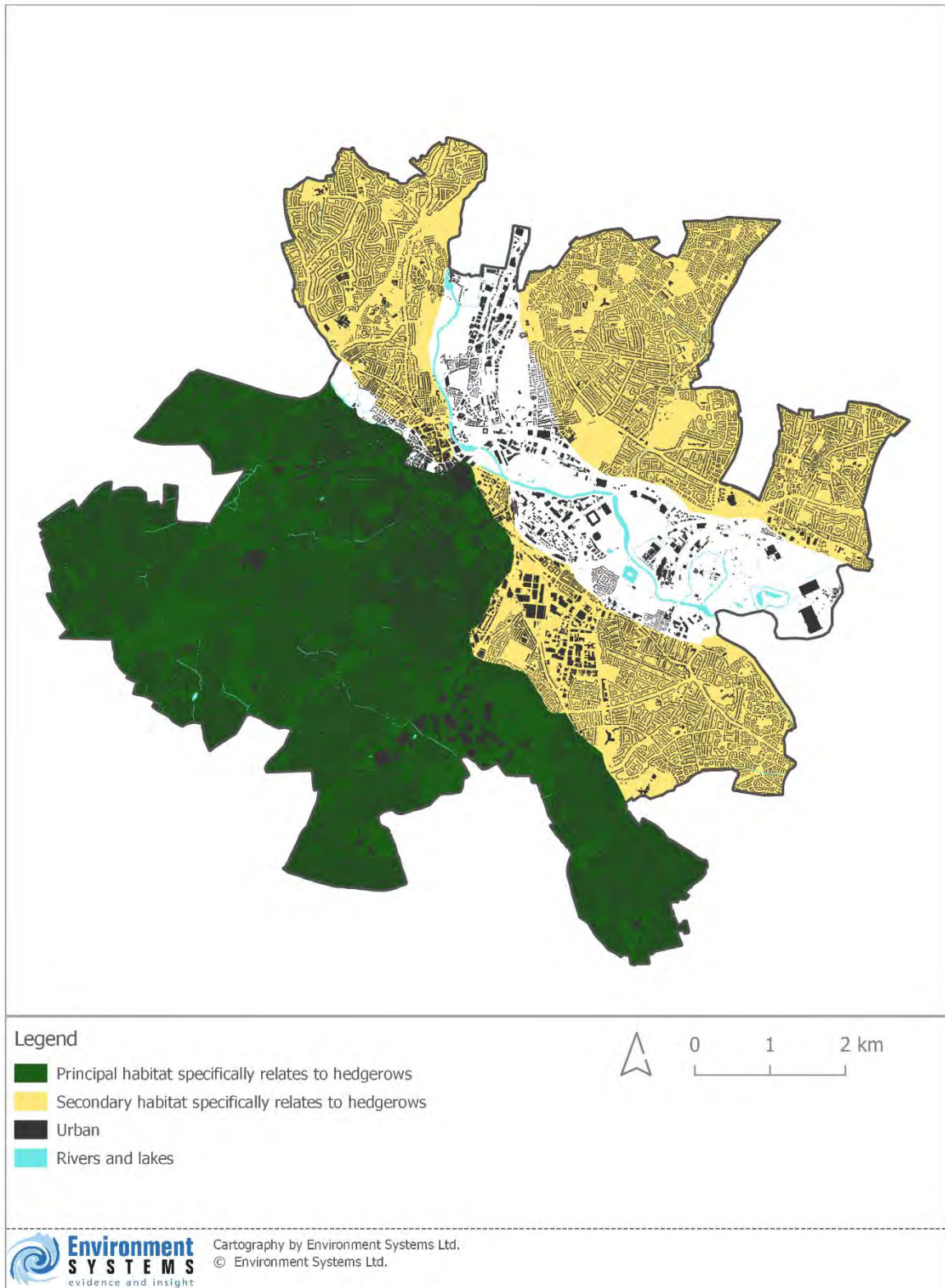


Figure 3: Landscape Character Types where the Heathland & Shrub broad habitat type is a priority for conservation, restoration or habitat creation

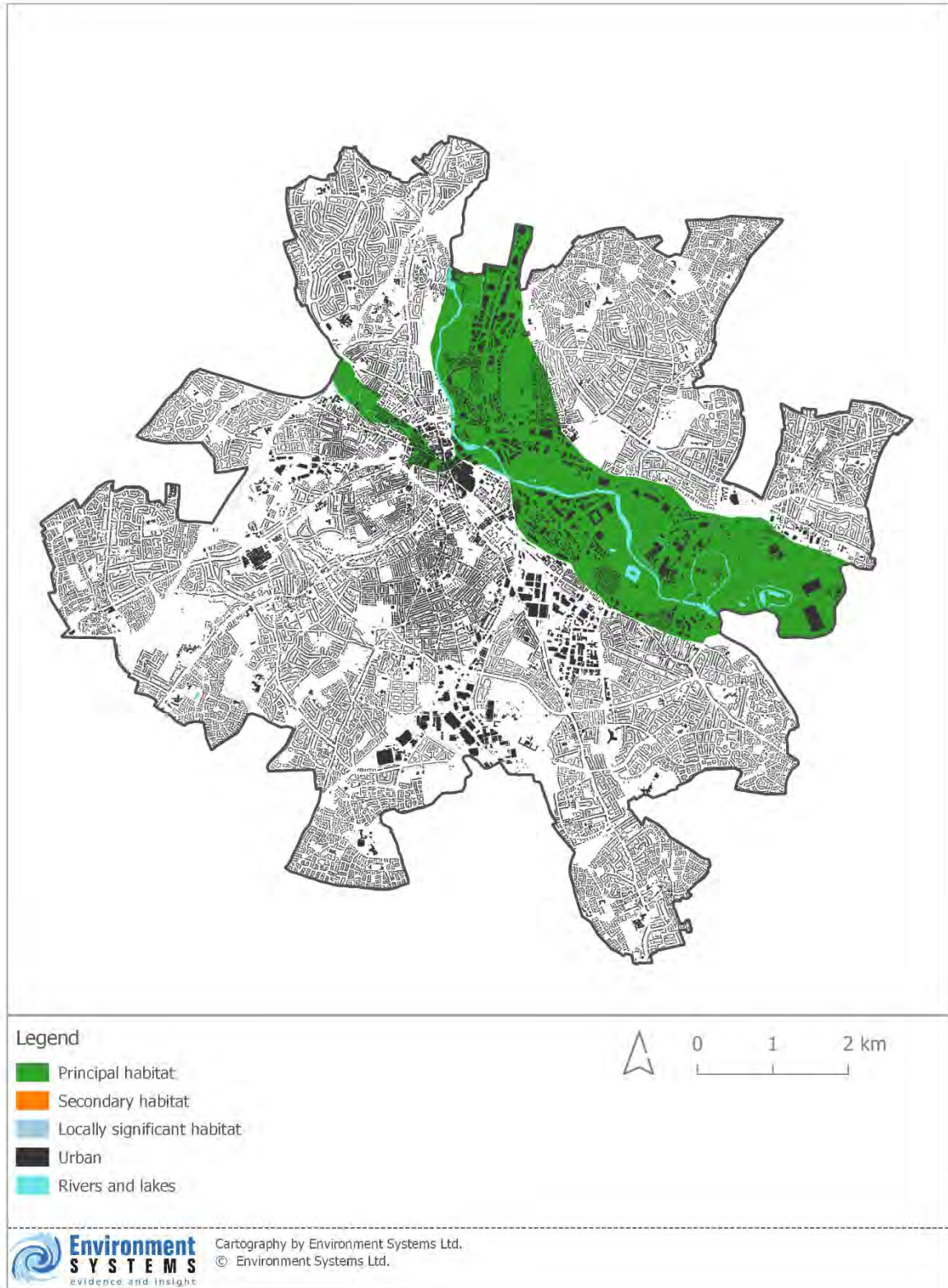


Figure 4: Landscape Character Types where the Wetland broad habitat type is a priority for conservation, restoration or habitat creation

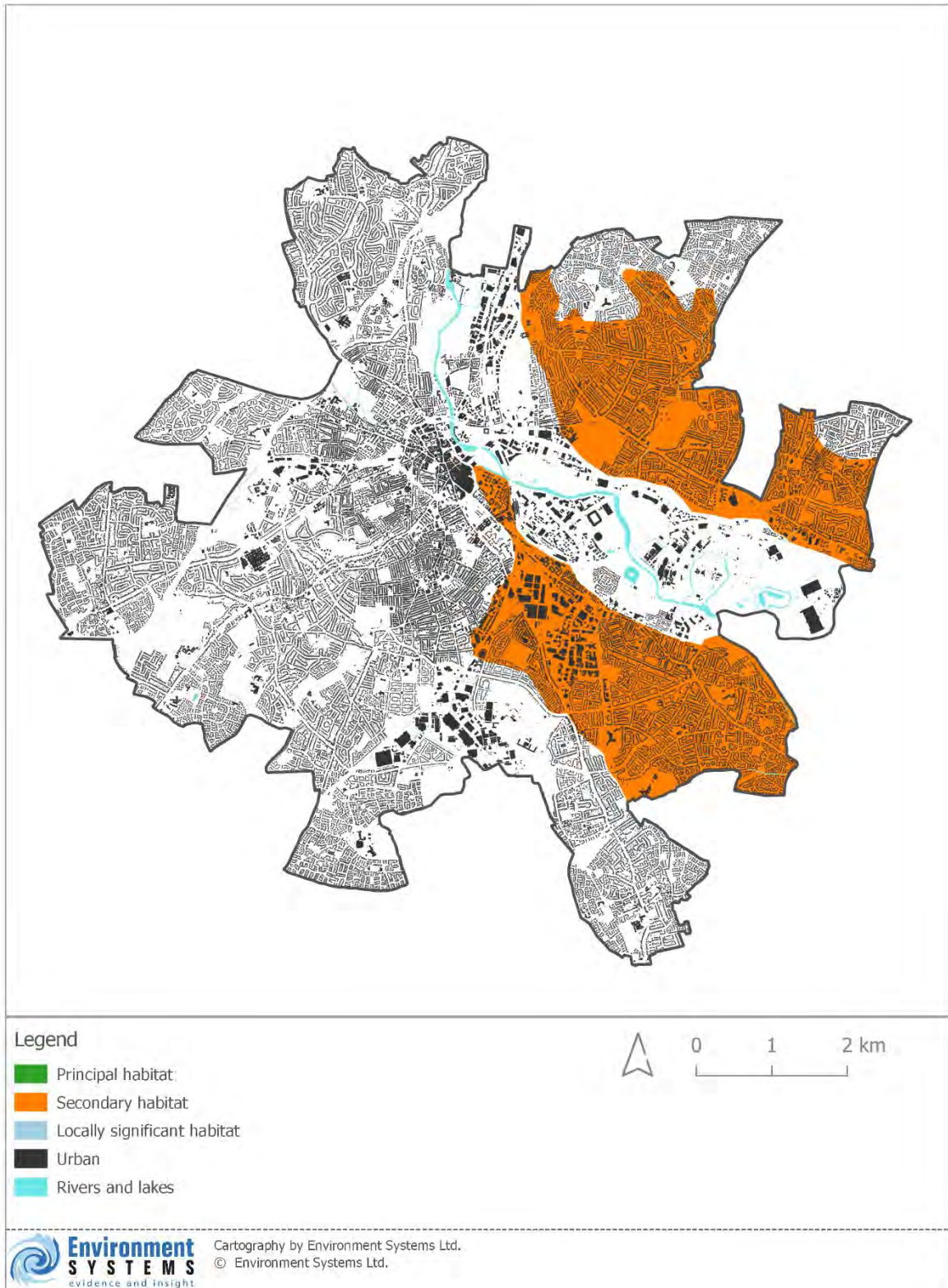


Figure 5: Landscape Character Types where the Urban broad habitat type is a priority for conservation, restoration or habitat creation

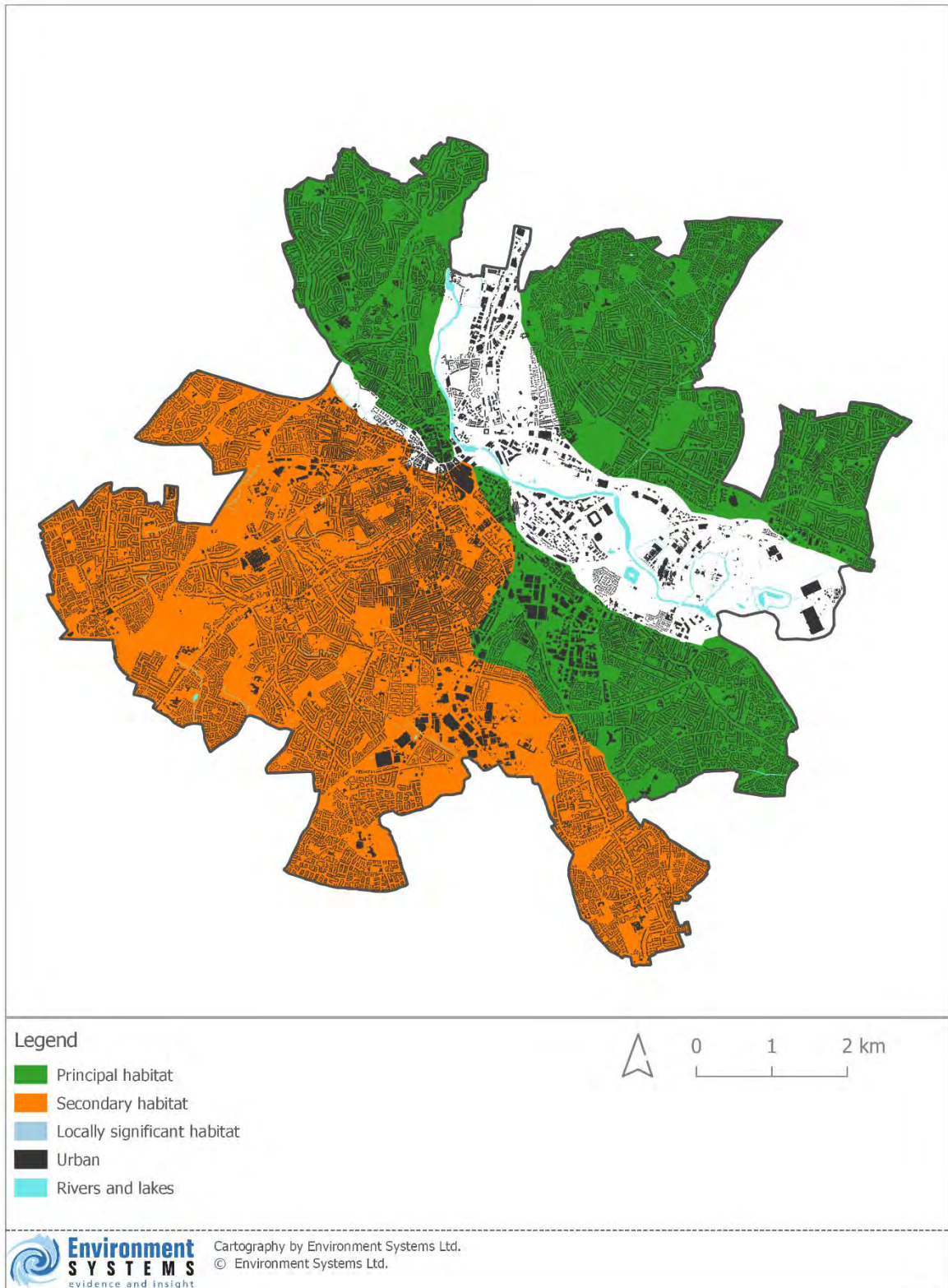


Figure 6: Landscape Character Types where the Cropland broad habitat type is a priority for conservation, restoration or habitat creation

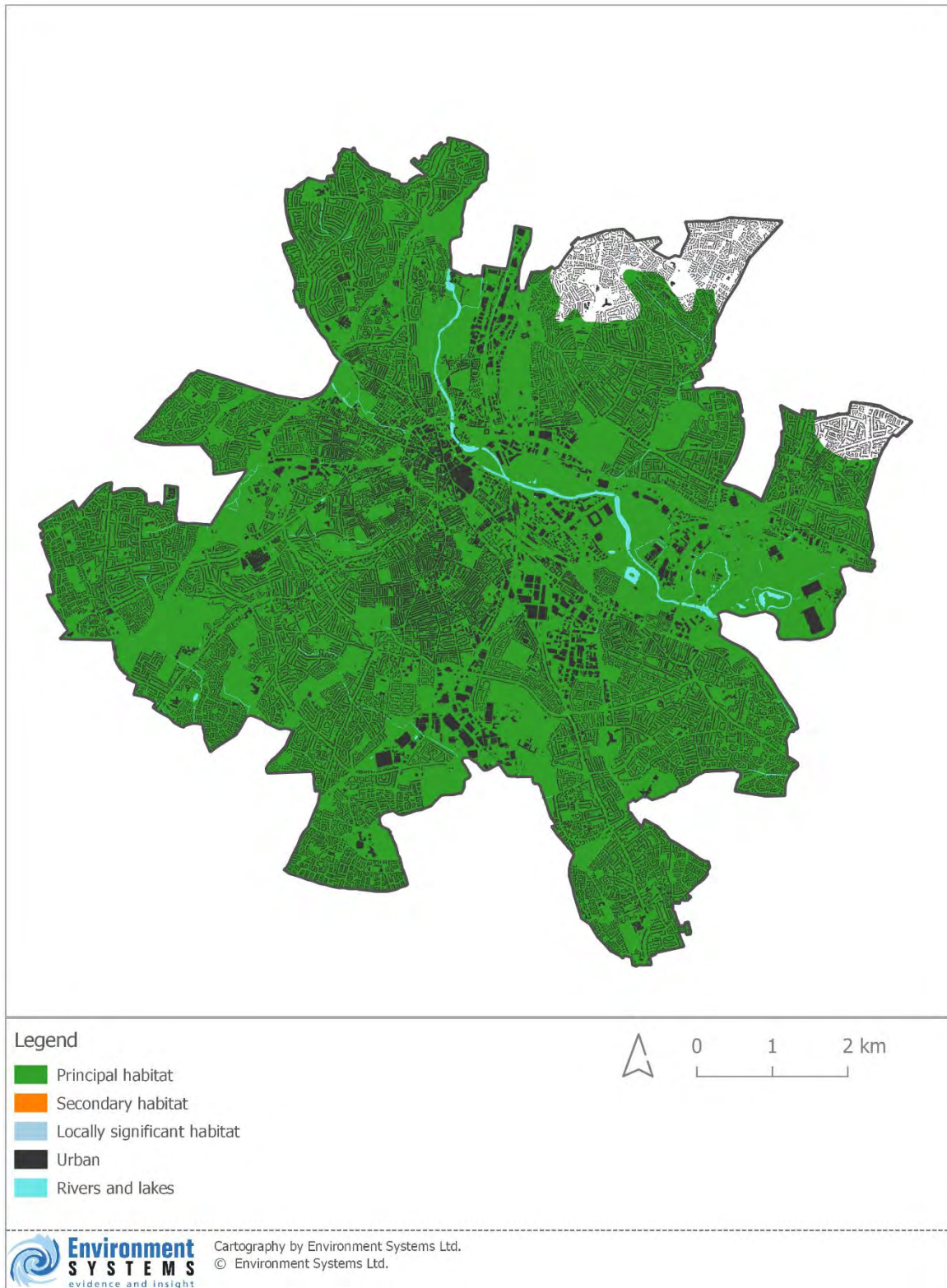


Figure 7: Landscape Character Types where the Rivers & Lakes broad habitat type is a priority for conservation, restoration or habitat creation

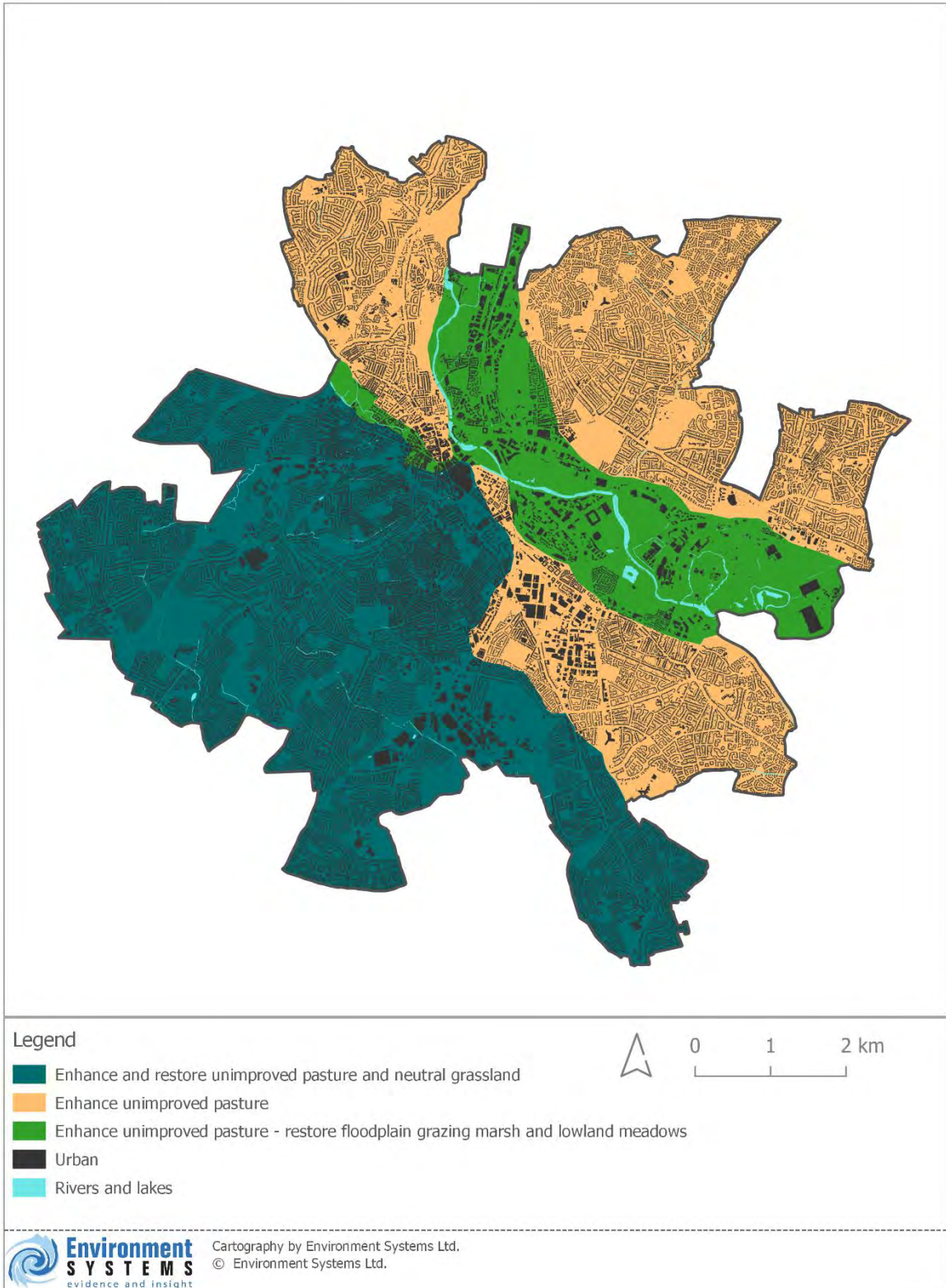


Figure 8: Locations where grassland-based habitat restoration or nature-based solutions could support the Landscape Character Type

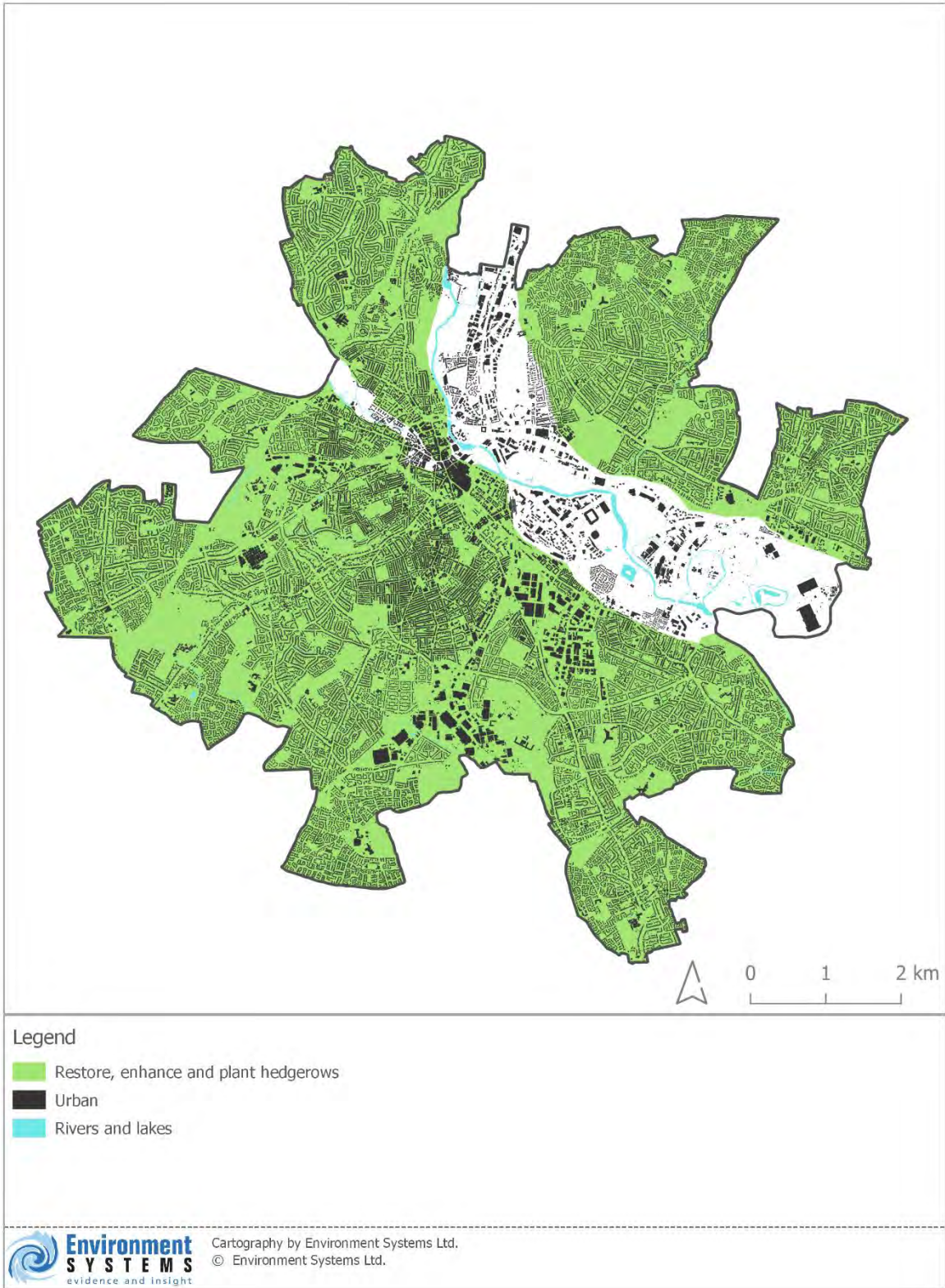


Figure 9: Locations where heathland-based habitat restoration or nature-based solutions could support the Landscape Character Type

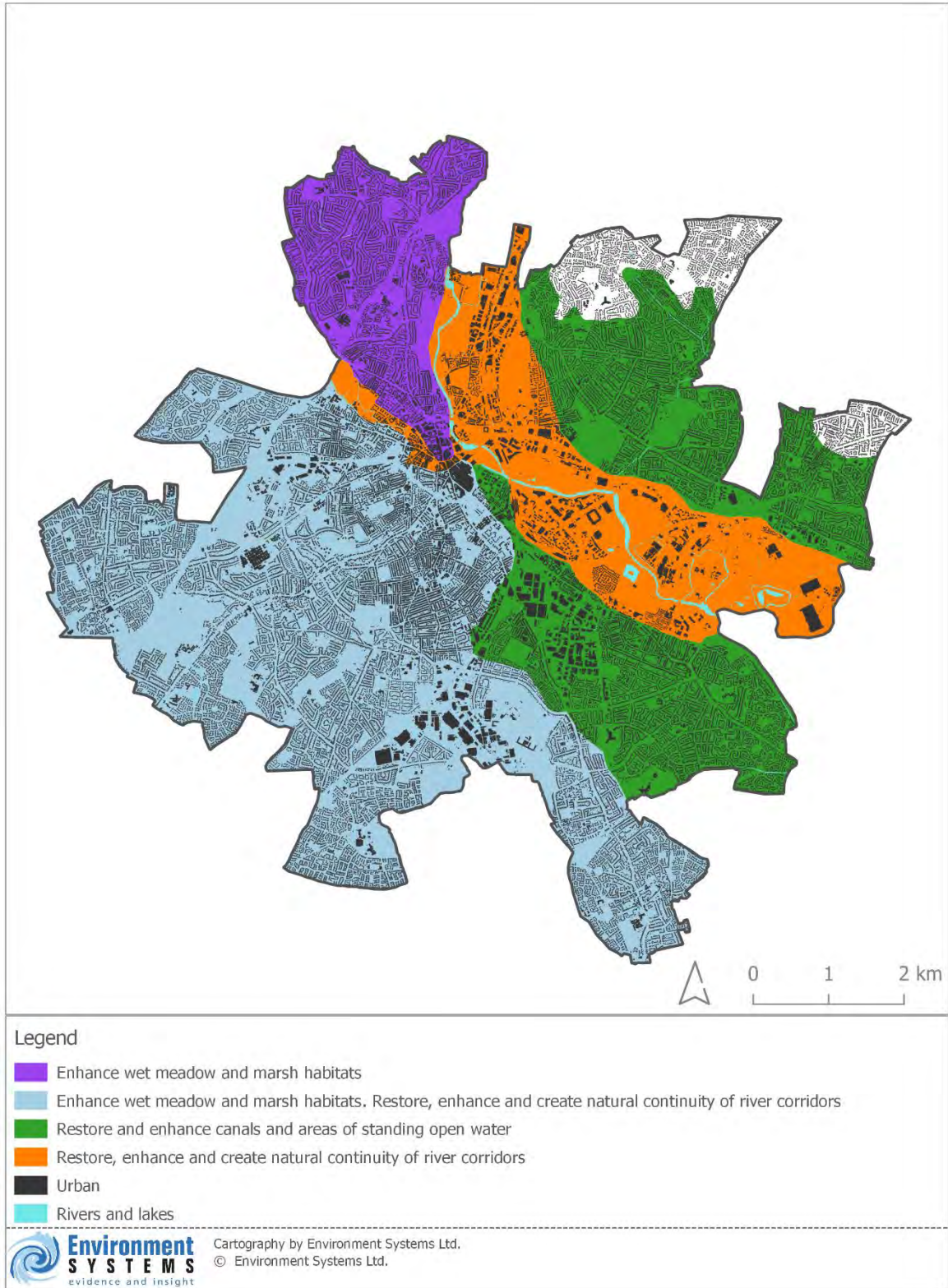


Figure 10: Locations where wetland-based habitat restoration or nature-based solutions could support the Landscape Character Type

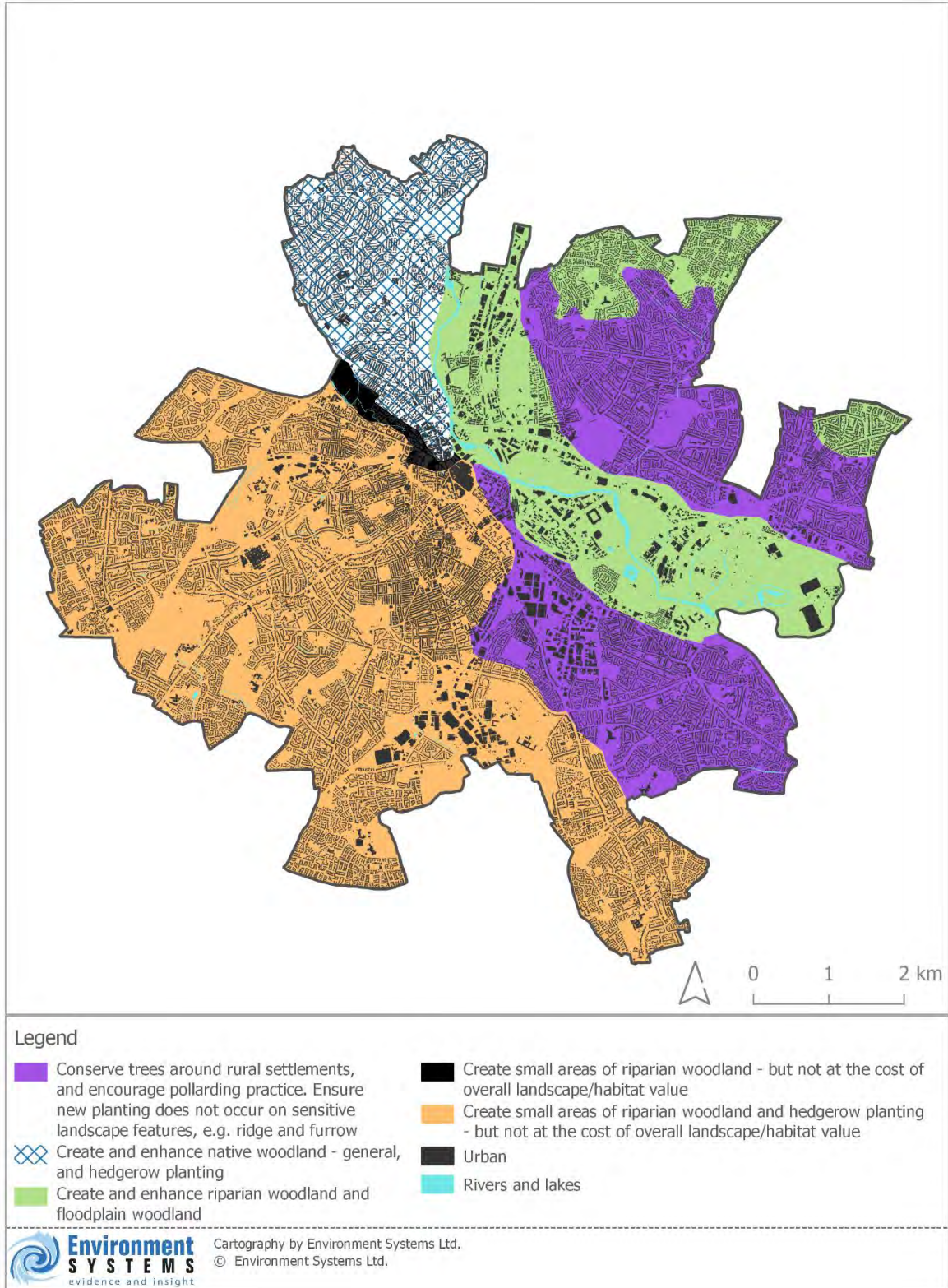


Figure 11: Locations where woodland-based habitat restoration or nature-based solutions could support the Landscape Character Type