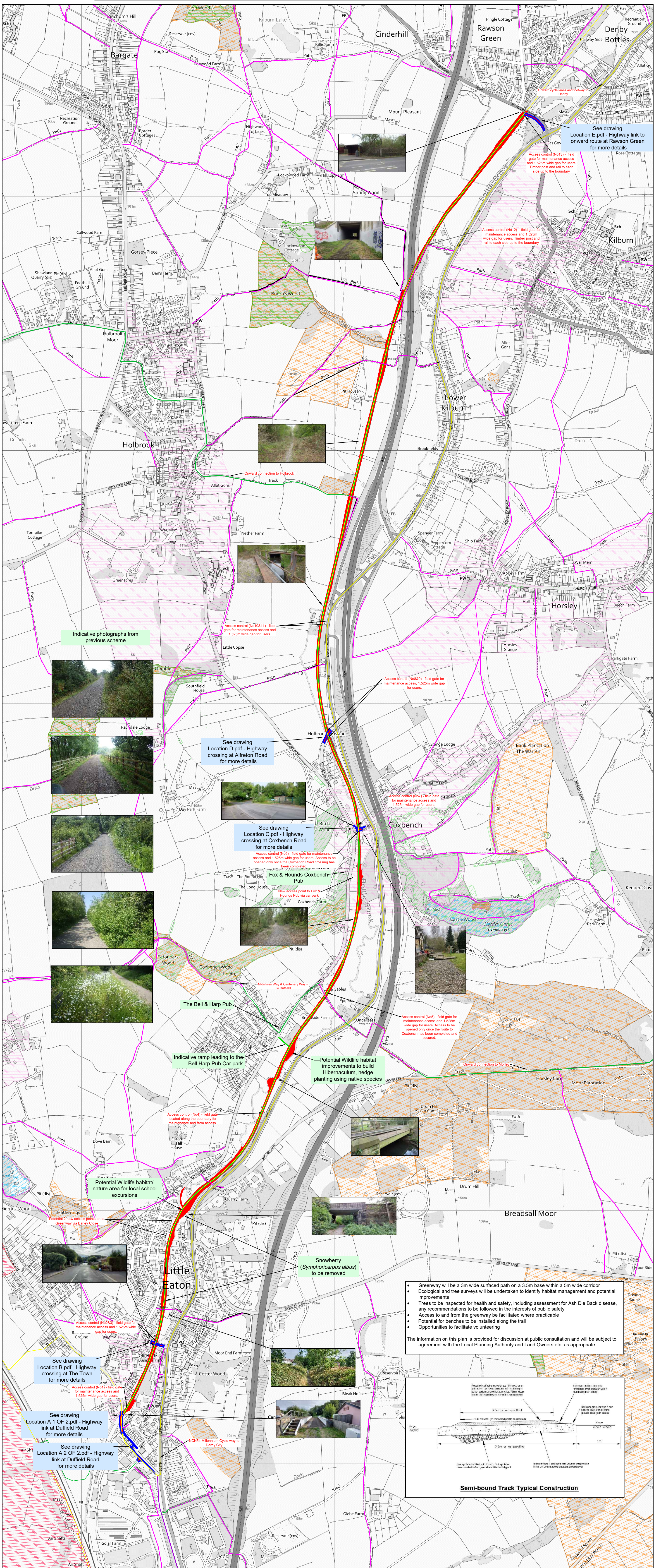
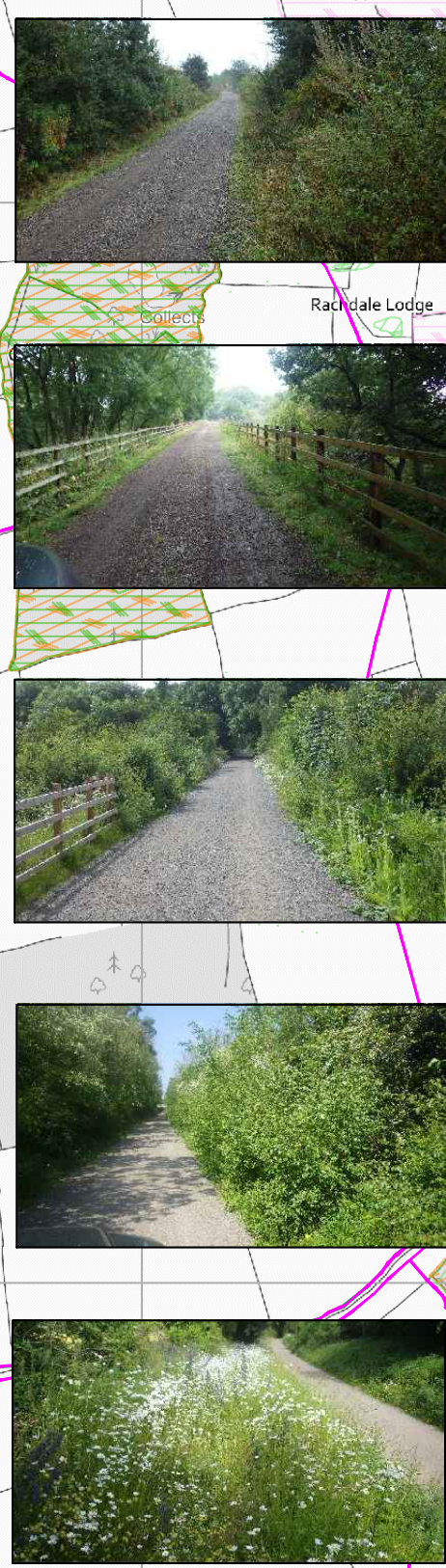


Little Eaton Branch Line Greenway - Public Consultation



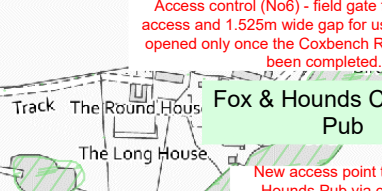
Indicative photographs from previous scheme



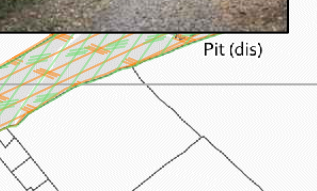
See drawing Location D.pdf - Highway crossing at Alfreton Road for more details



See drawing Location C.pdf - Highway crossing at Coxbench Road for more details



Fox & Hounds Coxbench Pub
New access point to Fox & Hounds Pub via car park



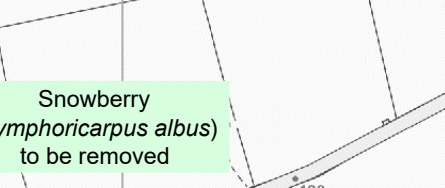
The Bell & Harp Pub

Indicative ramp leading to the Bell Harp Pub Car park

Potential Wildlife habitat improvements to build Hibernaculum, hedge planting using native species

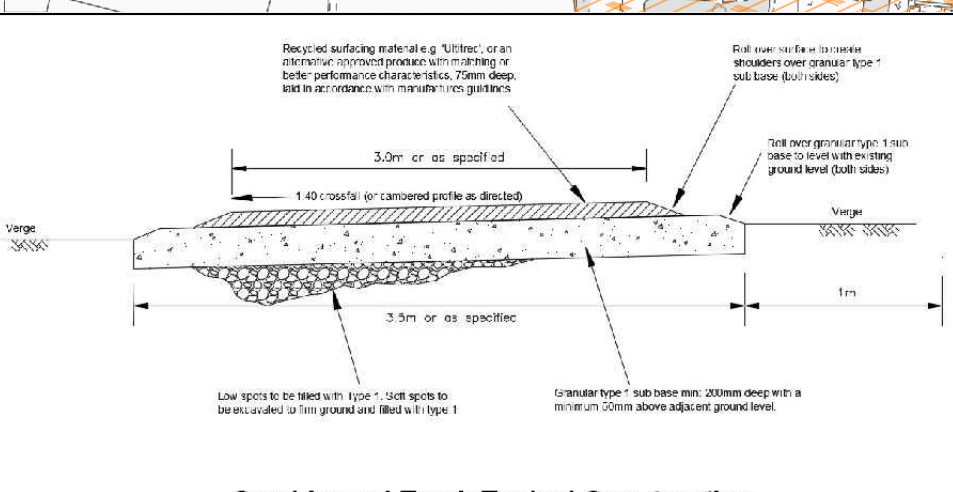


Snowberry (*Symphoricarpos albus*) to be removed



- Greenway will be a 3m wide surfaced path on a 3.5m base within a 5m wide corridor
- Ecological and tree surveys will be undertaken to identify habitat management and potential improvements
- Trees to be inspected for health and safety, including assessment for Ash Die Back disease, any recommendations to be followed in the interests of public safety
- Access to and from the greenway will be facilitated where practicable
- Potential for benches to be installed along the trail
- Opportunities to facilitate volunteering

The information on this plan is provided for discussion at public consultation and will be subject to agreement with the Local Planning Authority and Land Owners etc. as appropriate.



Key: Proposed Planning Area	Conservation Areas	Proposed Key Cycle Network	Proposed access ramp from The Bell & Harp Pub car park
Planning Boundary - Highways	World Heritage Site	Completed Key Cycle Network	
Proposed Greenway	Local Wildlife Sites	Proposed Local Cycle Network	
Public Footpath	Ancient Woodlands	Completed Local Cycle Network (NCN54 Millennium Cycle way to Derby City)	
Public Bridleway	Regionally Important Geological Site (RIGS)		

DRAWN BY: JJE
 DATE: 26/09/2022
 CHECKED BY: JJB
 DATE: 26/09/2022
 APPROVED BY: JJB
 DATE: 26/09/2022
 Drawing Number: 631404